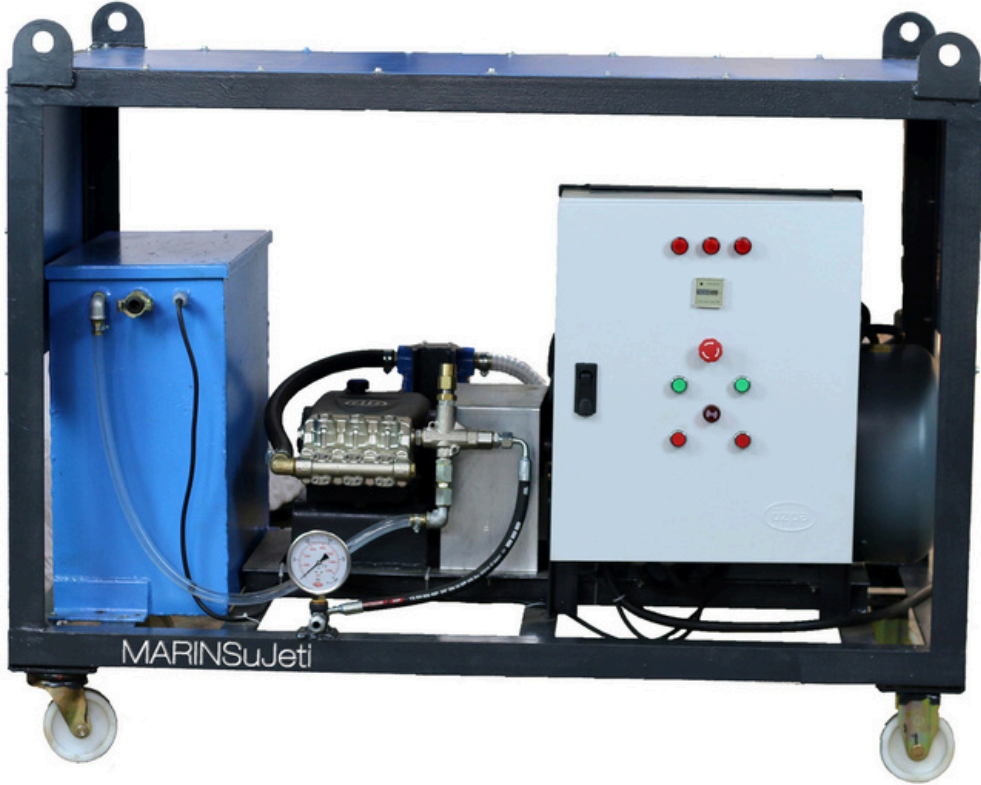




MR500/30

**500 BAR 30 LT  
WATER JET**





# MR500/30

The MR500/30 Water jet Machine is special equipment that offers superior performance in industrial and commercial areas with its powerful water jet cleaning. With adjustable high pressure capacity in the range of 200 Bar to 500 Bar and water flow rate of 30 liters/minute, allows you to effectively clean even the most difficult surfaces and debris. This water jet machine offers a wide range of applications in various industries. From construction sites to industrial facilities, from transport vehicles to agricultural areas, it meets the needs of effective cleaning in different areas. High-pressure water spraying provides a deep and fast cleaning of floors, walls, machines, vehicles and many other surfaces. Made of durable and robust materials, the MR200/15 water jet machine is designed to withstand hard and intense working conditions. Its durable, long lasting structure supports continuity of your business with low maintenance requirements. In addition, you can easily use this water jet machine thanks to its user-friendly design. It provides flexibility in your workspace with its portability and practical use. This machine, which has been designed taking into account the technical characteristics as well as the safety measures, keeps the operator safety at the highest level.



Mobil : 0537 394 5255  
Ofis 0540 394 5255



[www.marinsujeti.com](http://www.marinsujeti.com)



Evliya Çelebi Mahallesi, Tuzla Gemi Yan  
Sanayi Fersah Sokak, No:3 / 31 Tuzla, İstanbul  
[info@marinsujeti.com](mailto:info@marinsujeti.com)



# MR500/30

DEFINITION	DESCRIPTION
ORIGIN	MADE IN TURKEY
MACHINE DESCRIPTION	JET MACHINE WITH 500 BARS HIGH PRESSURE CAPACITY
FIELDS OF USE	VESSELS, INDUSTRIAL FACILITIES, CONSTRUCTION SITES, PETROCHEMICAL FACILITIES
PUMP PRESSURE	HIGH PRESSURE WATER JET PUMP WITH 3 CERAMIC PISTONS (ITALIAN ANNOVI REVERBERI)
WATER FLOW	30 LITERS / MINUTE
PRESSURE GUN	EASY-TO-USE TRIGGER OPERATED WITHOUT RECOIL
ÇALIŞMA BASINCI	500 BAR (200 - 500 BAR ADJUSTABLE BY-PASS SYTEM)
PUMP SAFETY SYSTEM	SPECIAL BY - PASS SYSTEM HIGH PRESSURE DISCHARGE VALVE
PISTON	3 PIECES OF CERAMIC PISTONS
PUMP WATER SUPPLY	SPECIAL WATER TANK
FILTER SYTEM	REPLACABLE 50 MICRON FILTER SYSTEM
POWER – CURRENT REQUIRED	30 Kw 40 HP *380/440V 50/60Hz (POWERFULL AIR COOLING)

# MR500/30

DEFINITION	DESCRIPTION
ENGINE SPEED/RPM	1500 SPEED /RPM/ MINUTE
ELECTRICAL CABLE LENGHT	5 METER (4X10 TTR – FUNCTIONALLY INCREASABLE)
ELECTRICAL SAFETY SYSTEM	STAR TRIANGLE PANEL + EMERGENCY STOP BUTTON
PUMP AND MOTOR CONNECTION	A COUPLED SYSTEM CONNECTED WITH FLEXABLE 160MM COUPLING
MACHINE DESIGN	NEW MODEL INNOVATIVE DESIGN WITH 4 EYEBOLT CONNECTIONS
PRESSURE HOSE LENGTH	20 METERS HIGH PRESSURE HOSE (SPECIAL HOSE WITH 445 BAR WORKING PRESSURE THAT IS FUNCTIONALLY INCREASABLE)
PRESSURE NOOZZLE	RETEMEC 055 ROTARY NOZZLE (FUNCTIONALLY CHANGEABLE)
WHEELS	4 WHEELS, 2 ARE FIXED AND THE OTHER 2 ARE STEERING WHEELS / HEAVY DUTY WORK TYPE WHEELS
MACHINE WEIGHT	550-600 KG

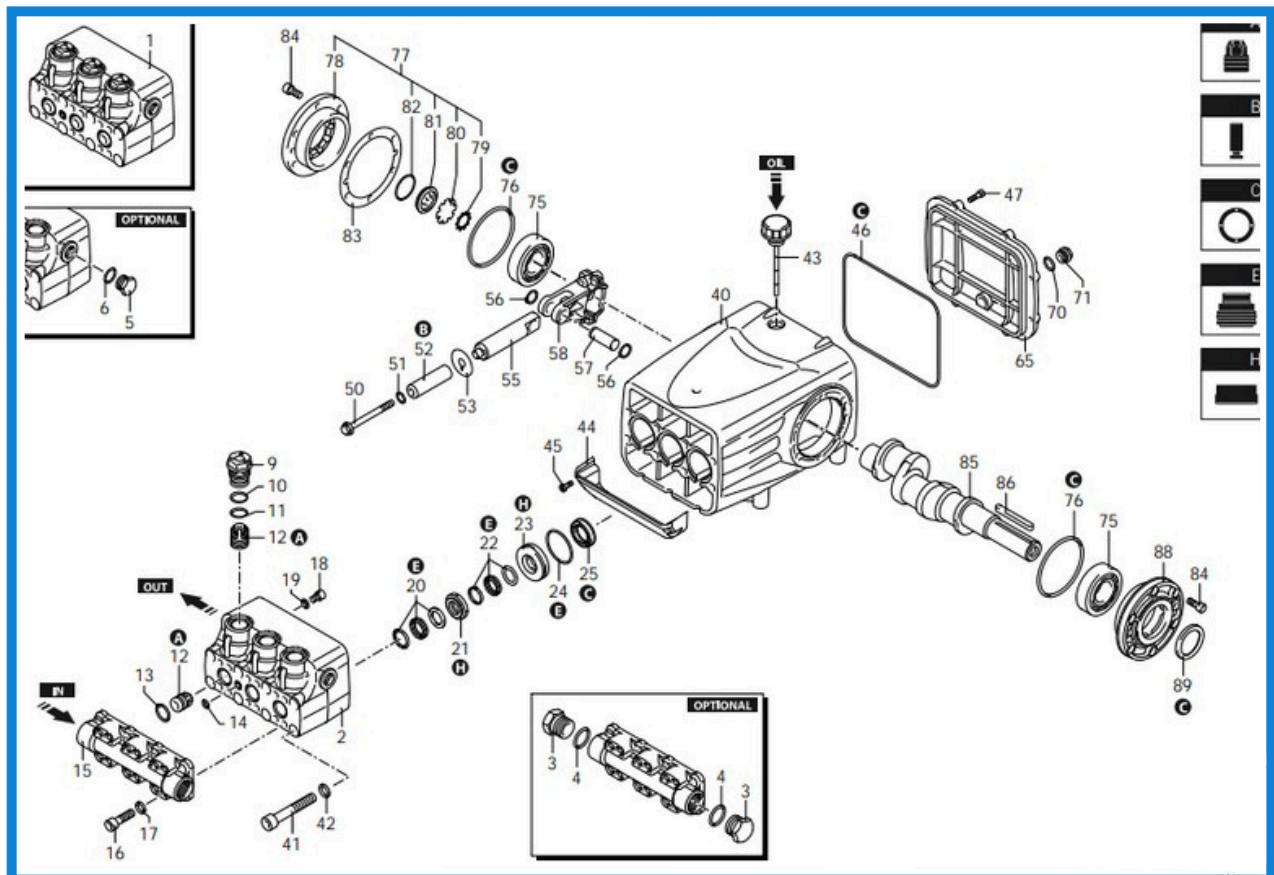
# MR500/30

## Spare Parts



### MRYP3050 PUMP

An Electric Motor is a special type of motor used in powerful water jet systems. This motor provides movement using high-pressure electric current energy. It is used as the driving mechanism of the water jet pump. Water Jet Electric Motor provides energy saving with its durable structure and high efficiency and I3 System. 30kwa 1500 Rpm b14 is Flanged.



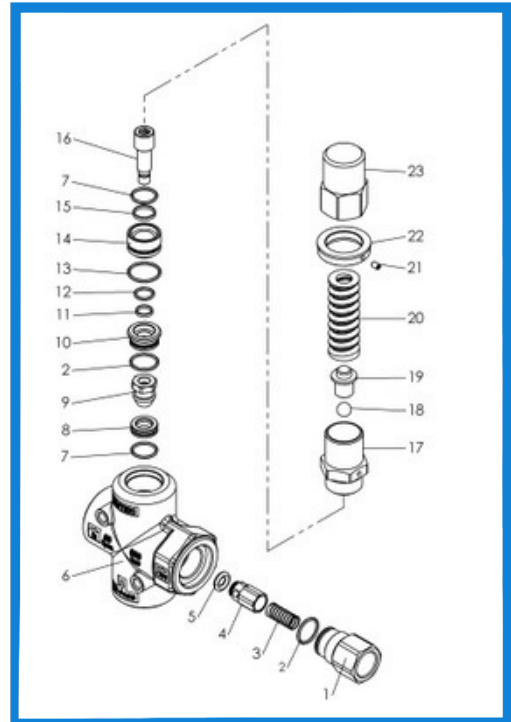
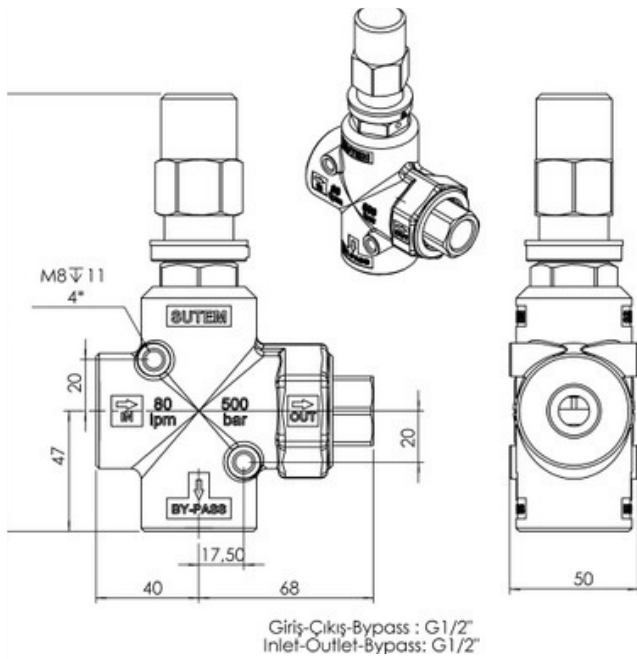
# MR500/30

## Spare Parts



### MRY80 PRESSURE REGULATOR

Pressure Regulator is a part used in water jet systems that performs the task of increasing and decreasing pressure. This regulator is designed to adjust the water pressure to the desired level. Users of this device can regulate the pressure and achieve the desired sensitivity. This regulator plays an important role in optimizing system performance, protecting equipment and saving energy.





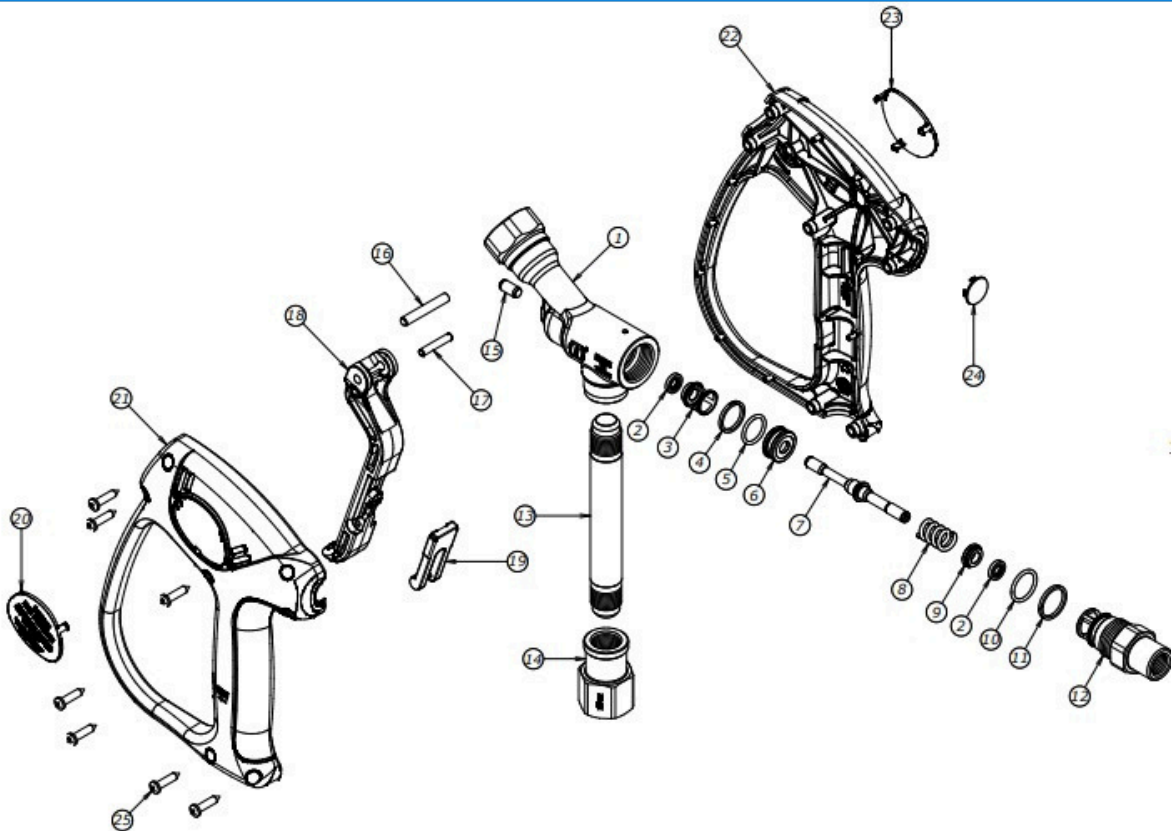
# MR500/30

## Accessories



### MRAT510 HIGH PRESSURE GUN

The High Pressure Gun is a device designed for effective cleaning and sprays applications with strong water pressure. This gun sprays water at high pressure, allowing you to easily remove difficult dirt and debris. It is usually used in various fields such as garden cleaning, car washing or surface cleaning. It is an easy-to-use and effective tool with its durable structure and user-friendly design.



# MR500/30

## Spare Parts



### MRYP80 WATER SUPPLY PUMP

The water supply pump in water jets is an important component that allows water to be sprayed with high pressure. This pump creates pulses by pushing the water at high speed, thereby ensuring that the water jet is sharp, dense and strong. The water supply pump performs the function of pressurizing and spraying water.



### MRY500/30 CONTROL UNIT

The Control Unit is a compact unit used to control the water jet machine. This unit provides convenience to users and offers the possibility to manage different functions. Thanks to the Control Unit, control is increased by implementing functions such as machine opening/stopping/emergency stopping water level control and stopping. It is also ready for the infrastructure of different locations with 50/60 HZ Voltage options.



### MRYT60 WATER RESERVOIR /TANK

A Water Reservoir is a water storage unit used in a water jet. This reservoir allows water to be stored. It is usually used in portable water jet devices or stationary systems. The Water Reservoir provides a continuous water supply by storing water and makes water jet operations more efficient. The Water-jet Water Tank made of durable materials supports the safe storage and use of water.



# MR500/30

## Spare Parts



### MRYKP160 PUMP CONNECTION COUPLING

Pump Coupling, s a flexible fastener used to connect pumps and pipelines of different sizes and types together. This coupling allows you to quickly and reliably combine pipes or pumps with different diameters and configurations. The coupling, which is made of durable material, provides sealing and resists pressure changes in the system. The Pump Connection Coupling ensures the safe transportation and transmission of water, oil, chemicals and other fluids.



### MRYKPL160 COUPLING RUBBER

Coupling Rubber is an elastic material used to connect different parts together and absorb vibration and impact during transportation. This rubber provides flexibility at the connection points and supports Coupling between moving parts. Coupling Rubbers, usually used in motors, pumps or machinery, provide durability and vibration absorption, providing a longer service life and stable operation. Its heat, oil and impact resistant structure provides a reliable connection in various industrial applications.



### MRYM100 PRESSURE GAUGE / MONOMETER

Pressure Gauge (Manometer) is a device used to measure and visually display the liquid or gas reservoir in a system. This monometer contains a measuring scale and a needle and helps you read the current pressure level. Pressure Gauges, which are usually used in industrial equipment, installation systems or machinery, provide accurate and reliable monitoring of the pressure in the system. This device helps operators to optimize operations and take corrective measures when necessary.

# MR500/30

## Spare Parts



### MRYH65 CONNECTION HOSE

The Connecting Hose is a flexible hose used to connect the pump in the water jet with the pressure gauge and ensure fluid transmission. This hose is made of durable materials and usually consists of an inner and outer layer with flexibility. The 3/8 Diameter Heads are 1/2 BSP in Size.



### MRYF10 WATER FILTER

Water Filter is a device that allows the water to be used cleanly and efficiently by catching the impurities, particles and foreign substances in the water. This filter protects the water jet system by blocking impurities from the water source and supports its long-lasting operation. The Water Filter improves the quality of the water and allows spraying operations to be performed more effectively and reliably. Therefore, it plays an important role for the sustainability of water-jet performance and the protection of equipment.



### MRYSM1.1/4 FLATOR

1.1/4 Flator is the part that serves as the level float / buoy of the water tank in the water jet. 1.1/4 Flator, Compact and durable design ensures that the water flow level is regular and reliable."

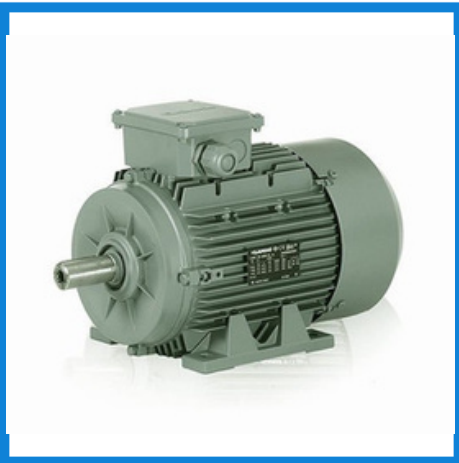
# MR500/30

## Spare Parts



### MRYSE3M LEVEL CONTROL FLOAT / BUOY

Level Control Buoy is a device that provides level control of the water in the water tank. This buoy stops the machine when the liquid level drops. It prevents the machine from working when there is no water in the Water Tank. Thanks to its durable and reliable structure, it prevents the machine from working without water flow and increases the machine service life.



### MRYEM30/1500 ELECTRIC MOTOR

An Electric Motor is a special type of motor used in powerful water jet systems. This motor provides movement using high-pressure electric current energy. It is used as the driving mechanism of the water jet pump. Water Jet Electric Motor provides energy saving with its durable structure and high efficiency and I3 System. 15kwa 1500 Rpm b14 is Flanged.



### MRANY055 RANGE NOZZLE

Range Nozzle is a special spraying accessory that allows water to spread over a wide area. It is usually used for garden watering or cleaning operations. Thanks to the ability to spray water in a thin and wide fan shape, it becomes possible to irrigate or clean large areas more uniformly / evenly. With its simple and effective design, it makes the process more efficient while ensuring the optimal use of water.

# MR500/30

## Spare Parts



### **MRAND055 ROTARY NOZZLE**

Rotary Nozzle is an accessory that allows water to be sprayed in a moving way. This nozzle is usually used for garden watering or cleaning purposes. It allows water to spread by rotating the water flow, which effectively distributes water over a wider area. This feature makes irrigation or cleaning operations faster and more efficient.

# MR500/30

## Accessories



### MRATN001 HIGH PRESSURE GUN BARREL 1 METER

1 Meter High Pressure Gun Barrel is a long barrel designed for effective cleaning applications with strong water pressure. Made of durable stainless material, this barrel provides access to higher points with a length of 1 meter. The size of Gun Connection Point is 3/8" and the Discharge Nozzle Connection Point is 1/4".



### MRATN002 HIGH PRESSURE GUN BARREL 50CM

50 cm High Pressure Gun Barrel is a long barrel designed for effective cleaning applications with strong water pressure. Made of durable stainless material, this barrel provides access to higher points with a length of 50cm. The size of Gun Connection Point is 3/8" and the Discharge Nozzle Connection Point is 1/4".



### MRAH445/20 HIGH PRESSURE HOSE

High pressure hose delivers high pressure water safely to durable and flexible pipes used in water jet systems.