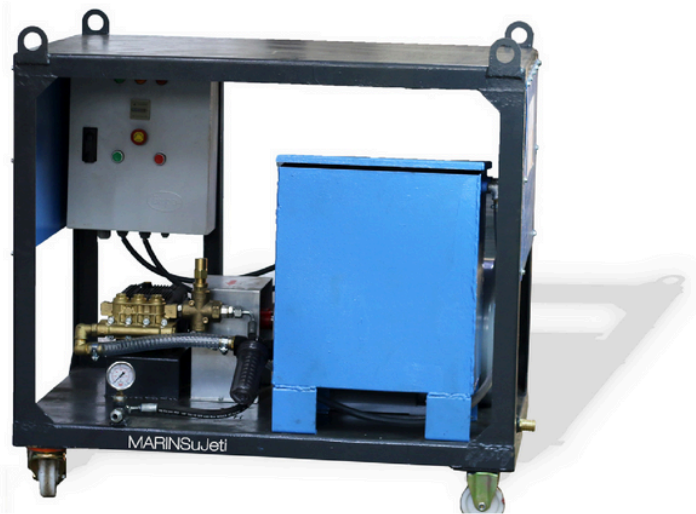




MR500/22

**500 BAR 22 LT
WATER JET**





MR500/22

DEFINITION	DESCRIPTION
ORIGIN	MADE IN TURKEY
MACHINE DESCRIPTION	JET MACHINE WITH 500 BARS HIGH PRESSURE CAPACITY
FIELDS OF USE	VESSELS, INDUSTRIAL FACILITIES, CONSTRUCTION SITES, PETROCHEMICAL FACILITIES
PUMP PRESSURE	HIGH PRESSURE WATER JET PUMP WITH 3 CERAMIC PISTONS (ITALIAN ANNOVI REVERBERI)
WATER FLOW	21 LITERS / MINUTE
PRESSURE GUN	EASY-TO-USE TRIGGER OPERATED WITHOUT RECOIL
WORKING PRESSURE	500 BAR (200 – 500 BAR ADJUSTABLE BY-PASS SYSTEM)
PUMP SAFETY SYSTEM	SPECIAL BY – PASS SYSTEM HIGH PRESSURE DISCHARGE VALVE
PISTON	3 PIECES OF CERAMIC PISTONS
PUMP WATER SUPPLY	SPECIAL WATER TANK
FILTER SYSTEM	REPLACABLE 50 MICRON FILTER SYSTEM
POWER – CURRENT REQUIRED	22 Kw 30 HP *380/440V 50/60Hz (POWERFUL AIR COOLING)

MR500/22

DEFINITION	DESCRIPTION
ENGINE SPEED/RPM	1500 SPEED /RPM/ MINUTE
ELECTRICAL CABLE LENGHT	5 METER (4X6 TTR – FUNCTIONALLY INCREASABLE)
ELECTRICAL SAFETY SYSTEM	STAR TRIANGLE PANEL + EMERGENCY STOP BUTTON
PUMP AND MOTOR CONNECTION	A COUPLED SYSTEM CONNECTED WITH FLEXABLE 125MM COUPLING
MACHINE DESIGN	NEW MODEL INNOVATIVE DESIGN WITH 4 EYEBOLT CONNECTIONS
PRESSURE HOSE LENGTH	20 METERS HIGH PRESSURE HOSE (SPECIAL HOSE WITH 445 BAR WORKING PRESSURE THAT IS FUNCTIONALLY INCREASABLE)
PRESSURE NOOZZLE	RETEMEC 040 ROTARY NOZZLE (FUNCTIONALLY CHANGEABLE)
WHEELS	4 WHEELS, 2 ARE FIXED AND THE OTHER 2 ARE STEERING WHEELS / HEAVY DUTY WORK TYPE WHEELS
MACHINE WEIGHT	350–420 KG

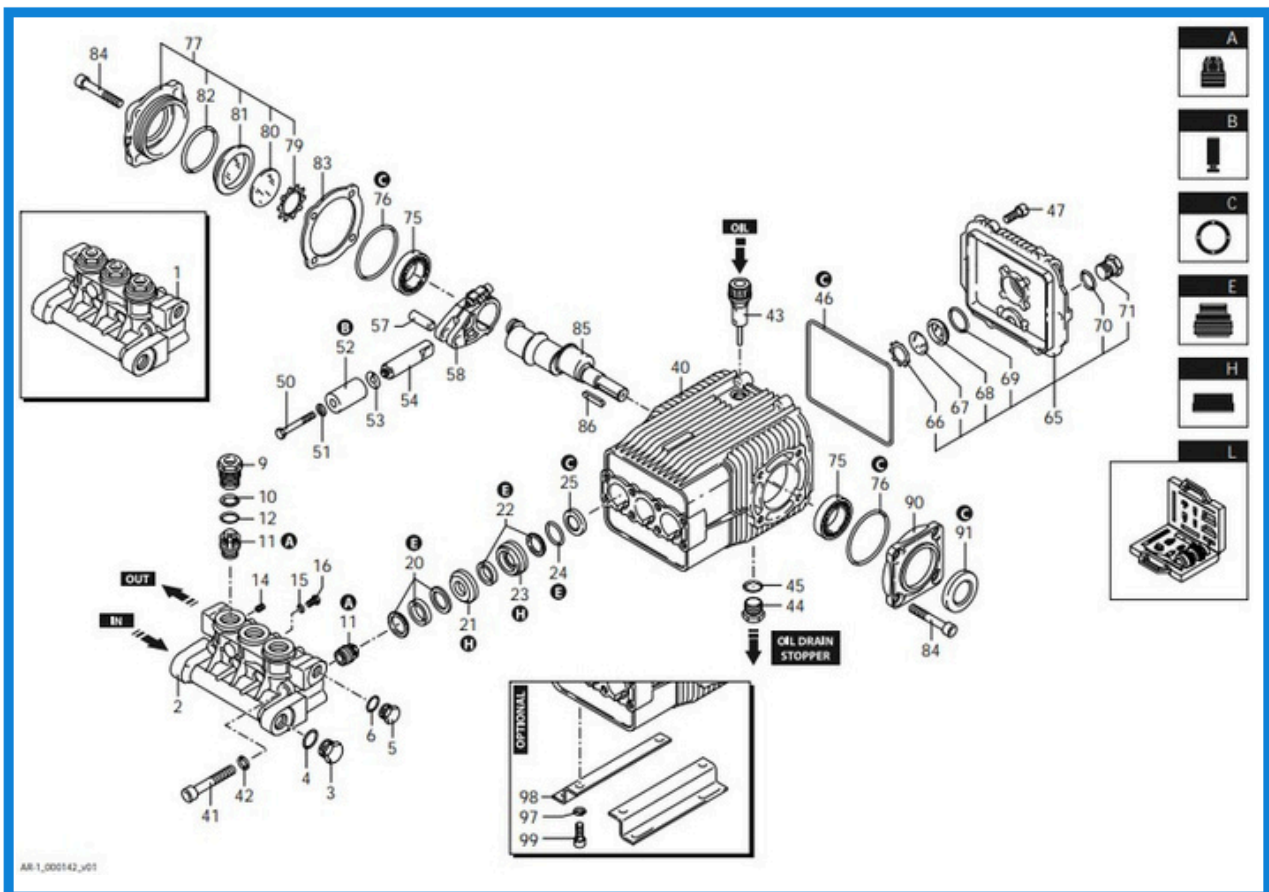
MR500/22

Spare Parts



MRYP2250 PUMP

An Electric Motor is a special type of motor used in powerful water jet systems. This motor provides movement using high-pressure electric current energy. It is used as the driving mechanism of the water jet pump. Water Jet Electric Motor provides energy saving with its durable structure and high efficiency and I3 System. 15kwa 1500 Rpm b14 is Flanged.



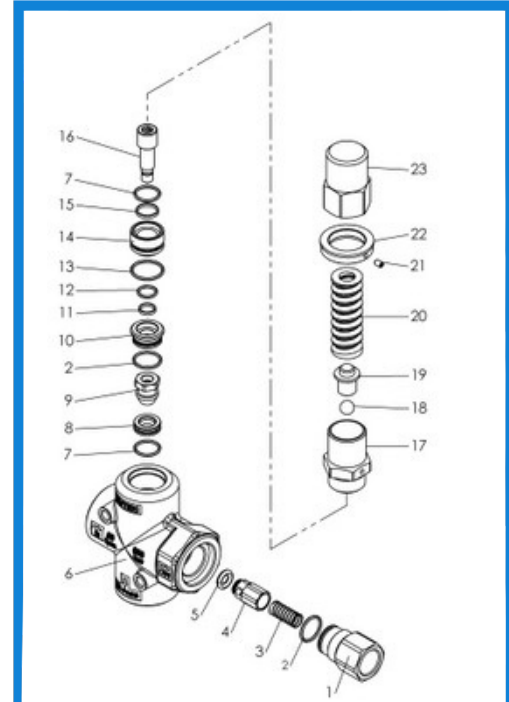
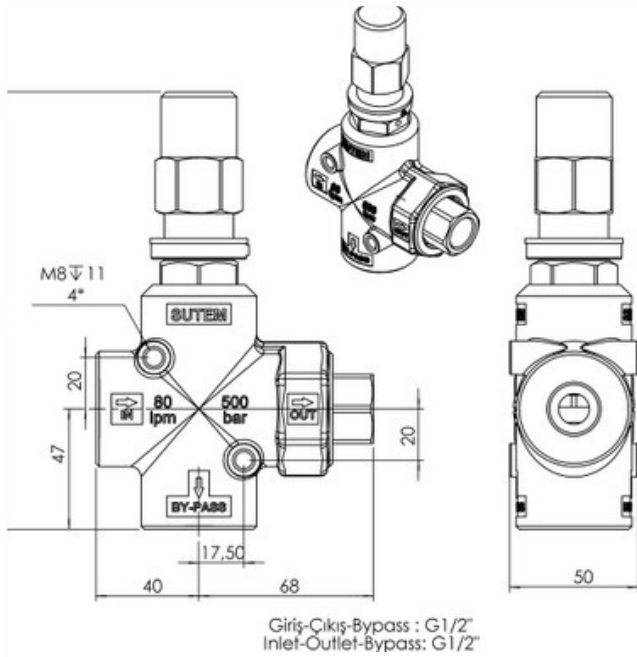
MR500/22

Spare Parts



MRY80 PRESSURE REGULATOR

Pressure Regulator is a part used in water jet systems that performs the task of increasing and decreasing pressure. This regulator is designed to adjust the water pressure to the desired level. Users of this device can regulate the pressure and achieve the desired sensitivity. This regulator plays an important role in optimizing system performance, protecting equipment and saving energy.



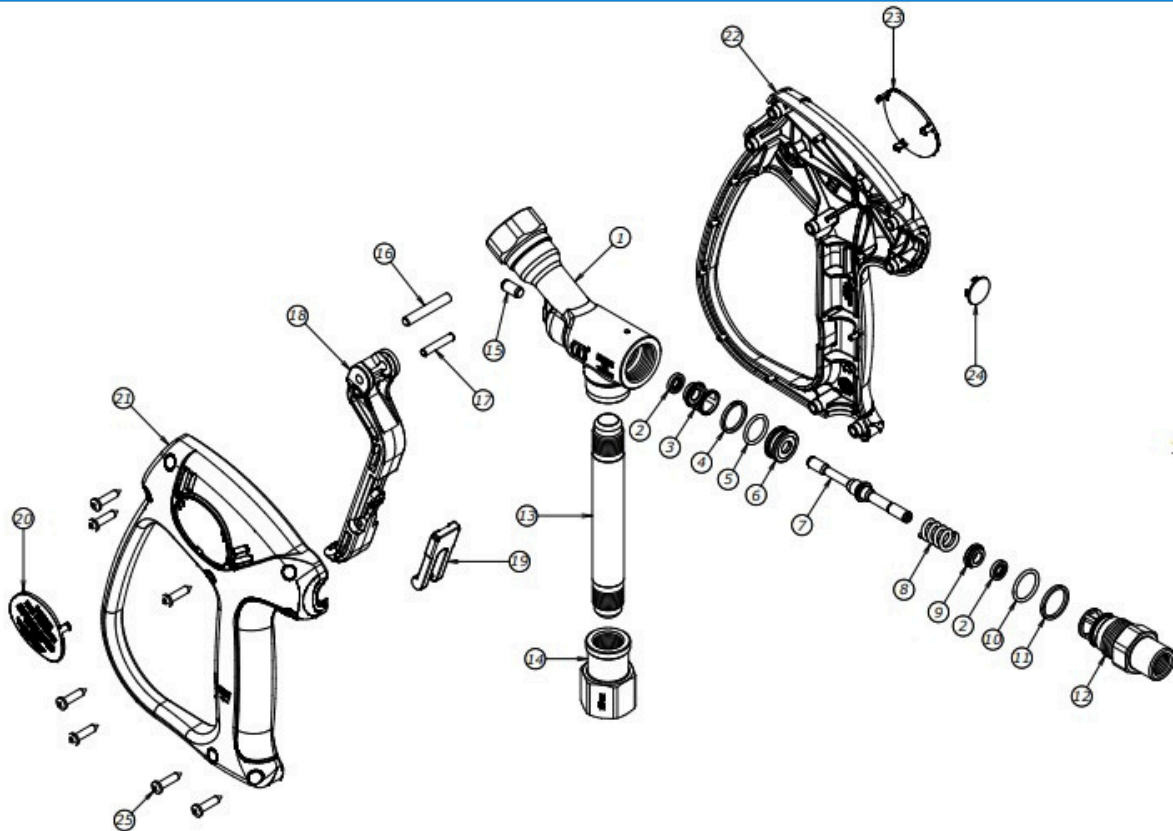
MR500/22

Accessories



MRAT510 HIGH PRESSURE GUN

The High Pressure Gun is a device designed for effective cleaning and sprays applications with strong water pressure. This gun sprays water at high pressure, allowing you to easily remove difficult dirt and debris. It is usually used in various fields such as garden cleaning, car washing or surface cleaning. It is an easy-to-use and effective tool with its durable structure and user-friendly design.



MR500/22

Spare Parts



MR500/22 CONTROL UNIT

The Control Unit is a compact unit used to control the water jet machine. This unit provides convenience to users and offers the possibility to manage different functions. Thanks to the Control Unit, control is increased by implementing functions such as machine opening/stopping/emergency stopping water level control and stopping. It is also ready for the infrastructure of different locations with 50/60 HZ Voltage options.



MRYEM15/1500 ELECTRIC MOTOR

An Electric Motor is a special type of motor used in powerful water jet systems. This motor provides movement using high-pressure electric current energy. It is used as the driving mechanism of the water jet pump. Water Jet Electric Motor provides energy saving with its durable structure and high efficiency and I3 System. 15kwa 1500 Rpm b14 is Flanged.



MRYT60 WATER RESERVOIR /TANK

A Water Reservoir is a water storage unit used in a water jet. This reservoir allows water to be stored. It is usually used in portable water jet devices or stationary systems. The Water Reservoir provides a continuous water supply by storing water and makes water jet operations more efficient. The Water-jet Water Tank made of durable materials supports the safe storage and use of water.

MR500/22

Spare Parts



MRYKP125 PUMP CONNECTION COUPLING

Pump Coupling, s a flexible fastener used to connect pumps and pipelines of different sizes and types together. This coupling allows you to quickly and reliably combine pipes or pumps with different diameters and configurations. The coupling, which is made of durable material, provides sealing and resists pressure changes in the system. The Pump Connection Coupling ensures the safe transportation and transmission of water, oil, chemicals and other fluids.



MRYKPL125 COUPLING RUBBER

Coupling Rubber is an elastic material used to connect different parts together and absorb vibration and impact during transportation. This rubber provides flexibility at the connection points and supports Coupling between moving parts. Coupling Rubbers, usually used in motors, pumps or machinery, provide durability and vibration absorption, providing a longer service life and stable operation. Its heat, oil and impact resistant structure provides a reliable connection in various industrial applications.



MRYM63 PRESSURE GAUGE / MONOMETER

Pressure Gauge (Manometer) is a device used to measure and visually display the liquid or gas reservoir in a system. This monometer contains a measuring scale and a needle and helps you read the current pressure level. Pressure Gauges, which are usually used in industrial equipment, installation systems or machinery, provide accurate and reliable monitoring of the pressure in the system. This device helps operators to optimize operations and take corrective measures when necessary.

MR500/22

Spare Parts



MRYH65 CONNECTION HOSE

The Connecting Hose is a flexible hose used to connect the pump in the water jet with the pressure gauge and ensure fluid transmission. This hose is made of durable materials and usually consists of an inner and outer layer with flexibility. The 3/8 Diameter Heads are 1/2 BSP in Size.



MRYF3/4 WATER FILTER

Water Filter is a device that allows the water to be used cleanly and efficiently by catching the impurities, particles and foreign substances in the water. This filter protects the water jet system by blocking impurities from the water source and supports its long-lasting operation. The Water Filter improves the quality of the water and allows spraying operations to be performed more effectively and reliably. Therefore, it plays an important role for the sustainability of water jet performance and the protection of equipment. Our water filter is 1/2 Filter.



MRYSM1.1/4 FLATOR

1.1/4 Flator is the part that serves as the level float / buoy of the water tank in the water jet. 1.1/4 Flator, Compact and durable design ensures that the water flow level is regular and reliable."

MR500/22

Spare Parts



MRAND040 ROTARY NOZZLE

Rotary Nozzle is an accessory that allows water to be sprayed in a moving way. This nozzle is usually used for garden watering or cleaning purposes. It allows water to spread by rotating the water flow, which effectively distributes water over a wider area. This feature makes irrigation or cleaning operations faster and more efficient.



MRANY040 RANGE NOZZLE

Range Nozzle is a special spraying accessory that allows water to spread over a wide area. It is usually used for garden watering or cleaning operations. Thanks to the ability to spray water in a thin and wide fan shape, it becomes possible to irrigate or clean large areas more uniformly / evenly. With its simple and effective design, it makes the process more efficient while ensuring the optimal use of water.



MRYSE3M LEVEL CONTROL FLOAT / BUOY

Level Control Buoy is a device that provides level control of the water in the water tank. This buoy stops the machine when the liquid level drops. It prevents the machine from working when there is no water in the Water Tank. Thanks to its durable and reliable structure, it prevents the machine from working without water flow and increases the machine service life.

MR500/22

Accessories



MRATN001 HIGH PRESSURE GUN BARREL 1 METER

1 Meter High Pressure Gun Barrel is a long barrel designed for effective cleaning applications with strong water pressure. Made of durable stainless material, this barrel provides access to higher points with a length of 1 meter. The size of Gun Connection Point is 3/8" and the Discharge Nozzle Connection Point is 1/4".



MRATN002 HIGH PRESSURE GUN BARREL 50CM

50 cm High Pressure Gun Barrel is a long barrel designed for effective cleaning applications with strong water pressure. Made of durable stainless material, this barrel provides access to higher points with a length of 50cm. The size of Gun Connection Point is 3/8" and the Discharge Nozzle Connection Point is 1/4".



MRAH445/20 HIGH PRESSURE HOSE

High pressure hose delivers high pressure water safely to durable and flexible pipes used in water jet systems.