

# MR250/15

## 250 BAR 15 LT

### WATER JET





# MR250/15

The MR250/15 Water jet Machine is special equipment that offers superior performance in industrial and commercial areas with its powerful water jet cleaning. With a high pressure capacity of 250 bars and a water flow rate of 15 liters/min, it allows you to effectively clean even the most demanding dirt and debris.

This water jet machine offers a wide range of applications in various industries. From construction sites to industrial facilities, from transport vehicles to agricultural areas, it meets the needs of effective cleaning in different areas. High-pressure water spraying provides a deep and fast cleaning of floors, walls, machines, vehicles and many other surfaces.

Made of durable and robust materials, the MR200/15 water jet machine is designed to withstand hard and intense working conditions. Its durable, long lasting structure supports continuity of your business with low maintenance requirements.

In addition, you can easily use this water jet machine thanks to its user-friendly design.

It provides flexibility in your workspace with its portability and practical use. This machine, which has been designed taking into account the technical characteristics as well as the safety measures, keeps the operator safety at the highest level.



Mobil : 0537 394 5255  
Ofis 0540 394 5255



Evliya Çelebi Mahallesi, Tuzla Gemi Yan  
Sanayi Fersah Sokak, No:3 / 31 Tuzla, İstanbul



[www.marinsujeti.com](http://www.marinsujeti.com)



[info@marinsujeti.com](mailto:info@marinsujeti.com)

# MR250/15

DEFINITION	DESCRIPTION
ORIGIN	MADE IN TURKEY
MACHINE DESCRIPTION	JET MACHINE WITH 250 BARS HIGH PRESSURE CAPACITY
FIELDS OF USE	VESSELS, INDUSTRIAL FACILITIES, CONSTRUCTION SITES, PETROCHEMICAL FACILITIES
PUMP PRESSURE	PISTON HIGH PRESSURE WATER JET PUMP (AR)
WATER FLOW	15 LITERS / MINUTE
PRESSURE GUN	EASY-TO-USE TRIGGER OPERATED WITHOUT RECOIL
WORKING PRESSURE	250 BAR (TURBO BY-PASS SYSTEM ADJUSTABLE FROM 60 TO 250 BAR)
PUMP SAFETY SYSTEM	SPECIAL BY – PASS SYTEM HIGH PRESSURE DISCHARGE LIMITER
PISTON	3 PIECES OF CERAMIC PISTONS
FILTER SYTEM	REPLACABLE 50 MICRON FILTER SYSTEM
POWER – CURRENT REQUIRED	7.5 Kw 10 HP *380/440V 50/60Hz (POWERFULL AIR COOLING)
MACHINE WEIGHT	75-100 KG

# MR250/15

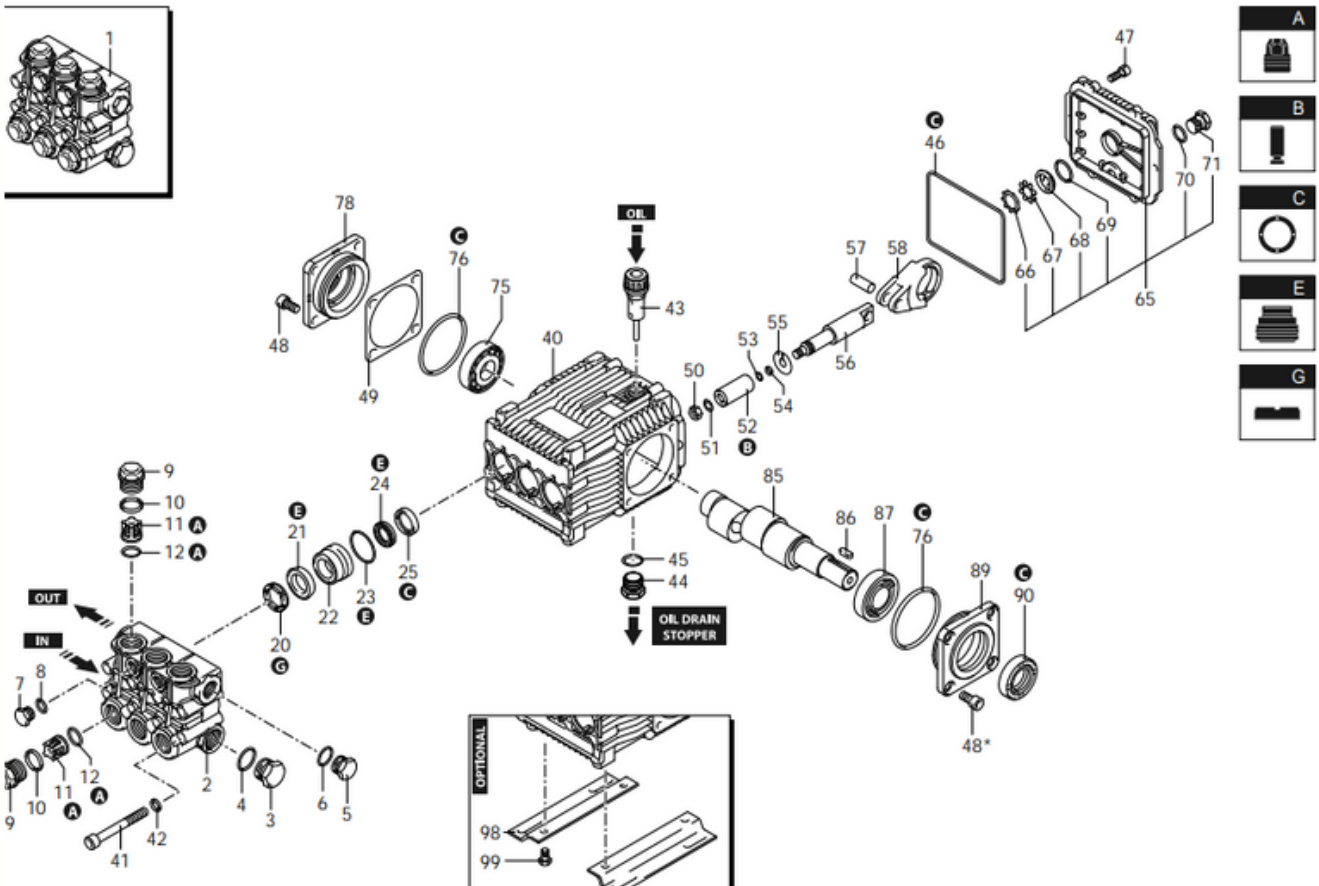
DEFINITION	DESCRIPTION
ENGINE SPEED/RPM	1500 SPEED /RPM/ MINUTE
ELECTRICAL CABLE LENGHT	5 METERS (4X4 TTR)
ELECTRICAL SAFETY SYSTEM	THERMAL PROTECTION + START/STOP
PUMP AND MOTOR CONNECTION	A SYSTEM COUPLED WITH FLEXIBLE COUPLING
MACHINE DESIGN	NEW MODEL INNOVATIVE DESIGN WITH 2 EYEBOLT CONNECTIONS
PRESSURE HOSE LENGTH	20 METER HIGH PRESSURE HOSE (SPECIAL HOSE WITH 330 BAR WORKING PRESSURE)
PRESSURE NOOZZLE	RANGE NOZZLE
WHEELS	4 WHEEL DESIGN, 2 OF THE WHEELS ARE 1ST CLASS AND THE OTHER 2 ARE STEERING / FILLED WHEELS

## Spare Parts



# MROP1525 PUMP

The Water Jet Pump is powerful equipment used for efficient cleaning operations by providing high-pressure water spraying. This pump is used in both industrial and commercial fields and facilitates for wide range of cleaning operations such as surface cleaning, dirt removal and removal of hard to remove stubborn dirt by supplying water at high pressure. With its durable structure and strong performance, it supports business continuity while increasing productivity in different sectors or industries.



# MR250/15

## Spare Parts



### MRY30 PRESSURE REGULATOR

Pressure Regulator is a part used in water jet systems that performs the task of increasing and decreasing pressure. This regulator is designed to adjust the water pressure to the desired level. Users of this device can regulate the pressure and achieve the desired sensitivity. This regulator plays an important role in optimizing system performance, protecting equipment and saving energy.



### MRY250/15 CONTROL UNIT

The Control Unit is a compact unit used to control the water jet machine. This unit provides convenience to users and offers the possibility to manage different functions. Thanks to the Control Unit, there are functions such as machine opening / stopping. It is also ready for the infrastructure of different locations with 50/60 HZ Voltage options.

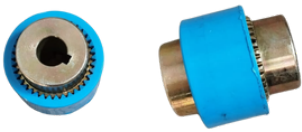


### MRYEM7.5/1500 ELECTRIC MOTOR

An Electric Motor is a special type of motor used in powerful water jet systems. This motor provides movement by using the energy generated by high-pressure water. It is usually used as the drive mechanism of water jet pumps. The Water Jet Electric Motor provides the power needed to ensure high-pressure spraying of water with its durable structure and high efficiency. It is effectively used in many fields, such as industrial cleaning, cutting or surface preparation. It has a 7.5kw 1500 Rpm b14 Flange.

# MR250/15

## Spare Parts



### MRYKP38 PUMP CONNECTION COUPLING

Pump Coupling, s a flexible fastener used to connect pumps and pipelines of different sizes and types together. This coupling allows you to quickly and reliably combine pipes or pumps with different diameters and configurations. The coupling, which is made of durable material, provides sealing and resists pressure changes in the system. The Pump Connection Coupling ensures the safe transportation and transmission of water, oil, chemicals and other fluids.



### MRYKPL38 COUPLING RUBBER

Coupling Rubber is an elastic material used to connect different parts together and absorb vibration and impact during transportation. This rubber provides flexibility at the connection points and supports Coupling between moving parts. Coupling Rubbers, usually used in motors, pumps or machinery, provide durability and vibration absorption, providing a longer service life and stable operation. Its heat, oil and impact resistant structure provides a reliable connection in various industrial applications.



### MRYM63 PRESSURE GAUGE / MONOMETER

Pressure Gauge (Manometer) is a device used to measure and visually display the liquid or gas reservoir in a system. This monometer contains a measuring scale and a needle and helps you read the current pressure level. Pressure Gauges, which are usually used in industrial equipment, installation systems or machinery, provide accurate and reliable monitoring of the pressure in the system. This device helps operators to optimize operations and take corrective measures when necessary.



# MR250/15

## Spare Parts



### MRYF1/2 WATER FILTER

Water Filter is a device that allows the water to be used cleanly and efficiently by catching the impurities, particles and foreign substances in the water. This filter protects the water jet system by blocking impurities from the water source and supports its long-lasting operation. The Water Filter improves the quality of the water and allows spraying operations to be performed more effectively and reliably. Therefore, it plays an important role for the sustainability of water jet performance and the protection of equipment. Our water filter is 1/2 Filter.



### MRAND040 ROTARY NOZZLE

Rotary Nozzle is an accessory that allows water to be sprayed in a moving way. This nozzle is usually used for garden watering or cleaning purposes. It allows water to spread by rotating the water flow, which effectively distributes water over a wider area. This feature makes irrigation or cleaning operations faster and more efficient.



### MRANY040 RANGE NOZZLE

Range Nozzle is a special spraying accessory that allows water to spread over a wide area. It is usually used for garden watering or cleaning operations. Thanks to the ability to spray water in a thin and wide fan shape, it becomes possible to irrigate or clean large areas more uniformly / evenly. With its simple and effective design, it makes the process more efficient while ensuring the optimal use of water.



# MR250/15

## Accessories



### MRAH330/20 YÜKSEK BASINÇ HORTUMU

Yüksek basınç hortumu, su jeti sistemlerinde kullanılan dayanıklı ve esnek boru, suyun yüksek basınçla iletilmesini sağlar.



### MRAT310 HIGH PRESSURE GUN

The High Pressure Gun is a device designed for effective cleaning and sprays applications with strong water pressure. This gun sprays water at high pressure, allowing you to easily remove difficult dirt and debris. It is usually used in various fields such as garden cleaning, car washing or surface cleaning. It is an easy-to-use and effective tool with its durable structure and user-friendly design.